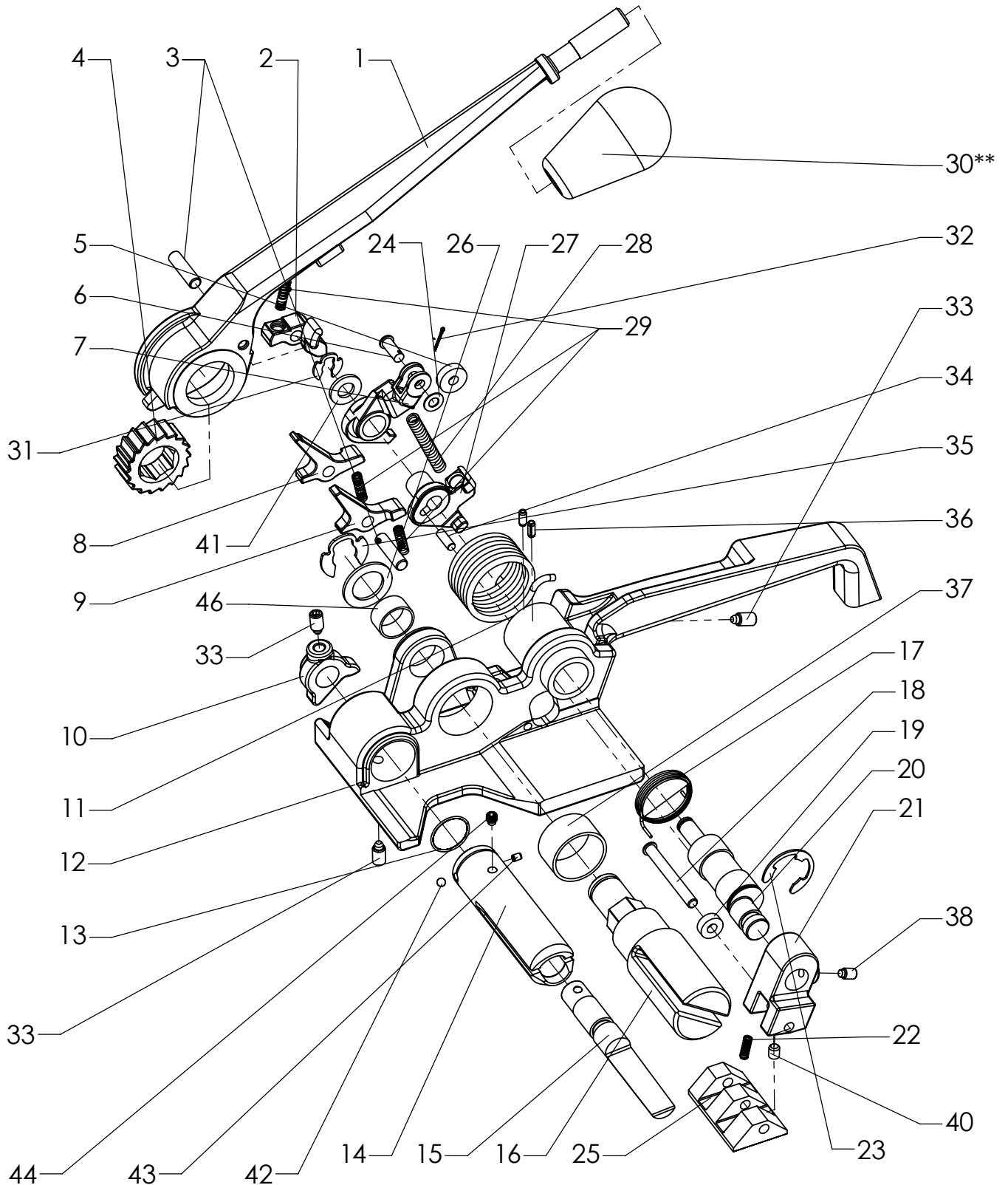




MUL-375

Heavy Duty Tensioner for Wide Cord



MUL-375 PART LIST

Heavy Duty Tensioner for Wide Cord

No	KEY No	PART DESCRIPTION	QUANTITY
1	375-01	HANDLE	1
2	370-02	TENSION PAWL	1
3	370-03	PIN	2
4	370-04	RATCHET WHEEL	1
5	370-05	ROLLER	1
6	370-06	ROLLER PIN	1
7	370-07	LEVER	1
8	370-08	PAWL LONG	1
9	370-09	PAWL SHORT	1
10	370-10	CUTTER LEVER	1
11	370-11	LEVER SPRING	1
12	375-12	FRAME	1
13	375-13*	CUTTER SPRING	1
14	375-14*	CUTTER HOUSING	1
15	375-15*	CUTTER	1
16	375-16	WINDLASS	1
17	370-17	SPRING	1
18	375-18	GRIPPER FOOT SHAFT	1
19	375-19	GRIPPER FOOT ROLLER	1
20	370-20	ECCENTRIC SHAFT	1
21	375-21	GRIPPER HOLDER	1
22	370-22	GRIPPER FOOT SPRING	1
23	370-23	E RETAINING RING (3/4")	1
24	370-24	WASHER 5x11x0.7	1
25	375-25	GRIPPER FOOT	1
26	370-26	WASHER	1
27	375-27	AUXILIARY LEVER	1
28	370-28	AUXILIARY SPRING	1
29	370-29	PAWL SPRING	3
30	370-30	KNOB	1
31	370-31	KLIPRING 5/16"	1
32	370-32	COTTER PIN 1/16"X1/2"	1
33	370-33	SET SCREW M6x12 DOG POINT	3
34	370-34	NEEDLE ROLLER 4x11,8	1
35	370-35	KLIPRING 5/8"	1
36	370-36	SPRING PIN 1/8"x5/16"	2
37	370-37	PLANE BEARING	1
38	370-38	SET SCREW M5x8 HALF DOG POINT	1
40	370-40	SET SCREW M5x6	1
40	370-41	WASHER 8	1
42	375-42*	BALL 5/32"	1
43	375-43*	SPRING PIN 3x4	1
44	375-44*	HEXAGON SOCKET SET SCREW M5x5	1
46	370-46	PLANE BEARING SMALL	1

***Part of the Cutter Assembly, order Part № 375-50**